

mScale™



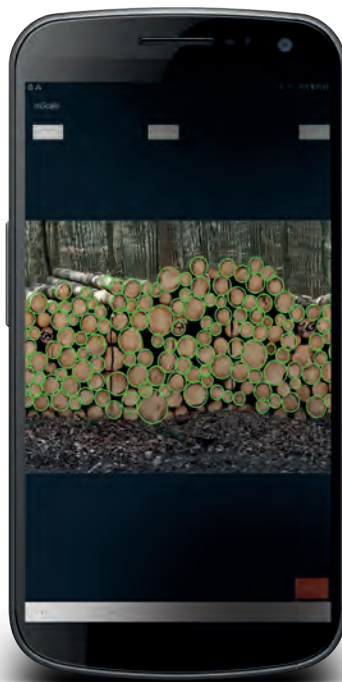
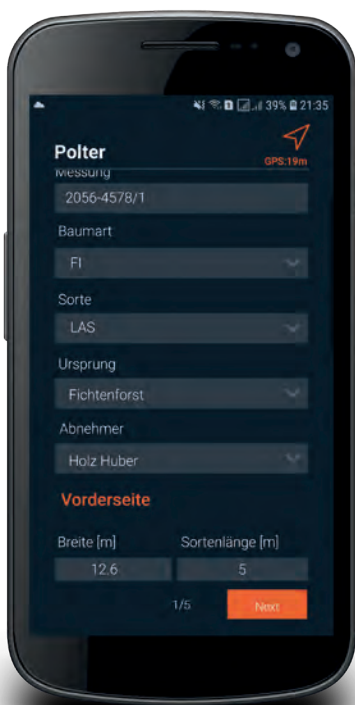
Manual timber measuring by using 'mScale' Digital recording and automation

Determining the number of items at the lumber stacks, documentation of manually recorded measured quantities, calculation of volumes and the mean values or the downstream data management represent complex steps during the implementation of conventional timber measuring methods in the forest.

With 'mScale' as part of the 'Stacks' product line, Dralle offers an Android app that takes traditional timber recording in the forest into a new era.

'mScale' substantially supports timber measuring in the forest, since all manually recorded measurement data in the section measuring process or in the individual log measuring is digitally recorded immediately. GPS positioning and a photo-optical automated counting function on a panorama picture supplement the measuring of timber in the forest.

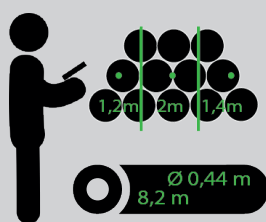
The timber recording process is digitised and documented from the very beginning. Utilisation of the DRALLE webServer makes it possible to process the data further with all of the DralleLogistik tools. The time required is drastically reduced, the complete process is accelerated and standardised, and error sources in the data transmission are avoided.



In addition, the lumbar stack photo documents the measuring and the condition of the timber, the GPS position lays the foundation for downstream logistics processes.

'mScale' operates offline in the forest. Data is transmitted to the central **DRALLE webServer** via mobile or wifi connection – when available. The card-based **DRALLE webServer** provides numerous functions for data processing.

In addition to various filter methods, the measuring results can be shared e.g., with contract partners, by using export functions. Furthermore, e.g., orders or delivery notes can be created by a mouse click. The 'mScale' user rights management is also performed via the **DRALLE webServer**. 'mScale' is the perfect tool not only for the forest owner but also for the forest service provider to document the work performed and to keep many manual office activities to a minimum. With **DRALLE webServer** however the forest owner always has the full overview of the complete volume of timber in his forests.



Measuring and labelling
lumber stacks and individual
logs by using the manual
standard procedure



Recording all relevant data on site
by using 'mScale' on a smartphone
or tablet (Android):

- Lumber stack numbers/log numbers
- Measurement results (heights, lengths, diameters)
- Panorama Photo
- automatic counting of the individual items displayed on the photo
- Diameter sampling on end faces
- GPS-Position

ON- or OFFLINE

mScale™



Data synchronisation with
DRALLE webServer.

- Data storage
- Data management
- Advanced data applications



webServer

Would you like to learn more?
Please contact us and we shall
find your tailored solution

sales@dralle.dk
www.dralle.dk

DRALLE A/S
Venlighedsvej 4
DK-2970 Hørsholm
Dänemark

Tel: +45 27 11 36 96
sales@dralle.dk
www.dralle.dk